

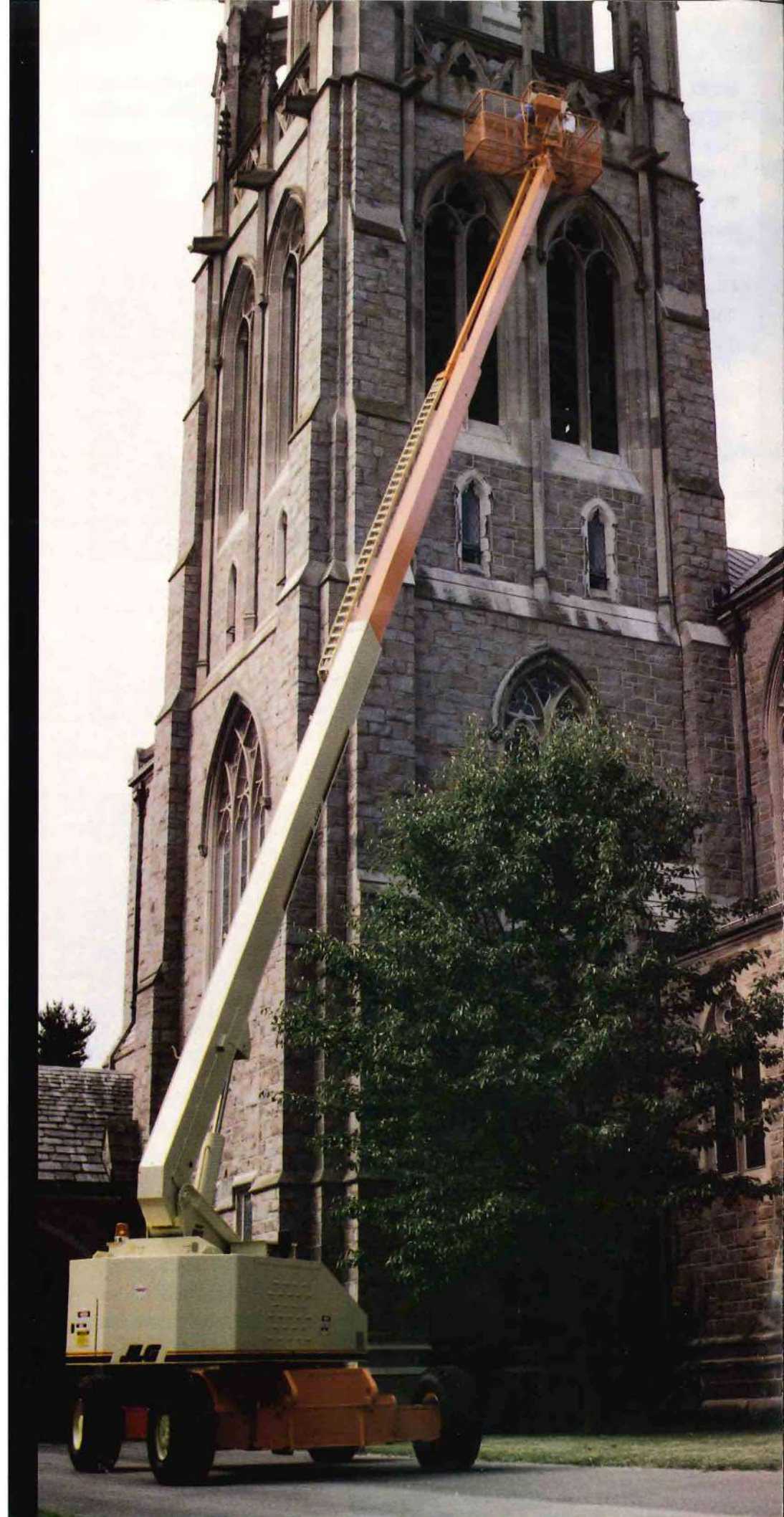
JLG[®]

CONSTRUCTION 80HX 80' STRAIGHT BOOM EXTENDABLE AXLE

A high performance,
extendable axle,
telescopic boom lift
designed for a wide
variety of maintenance,
construction and the
most demanding
high reach access
applications.



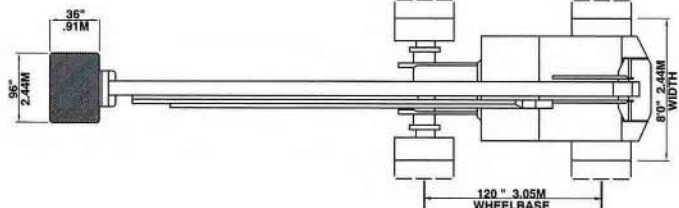
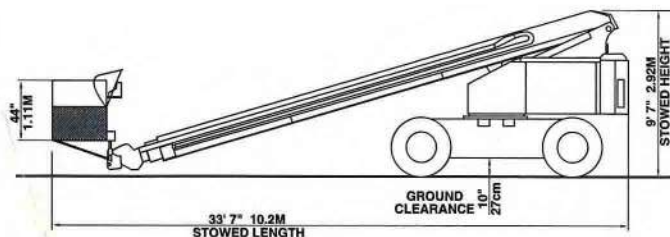
80HX+6 *The Patented
Extend-A-Reach
increases
operator versatility in positioning the
work platform.*



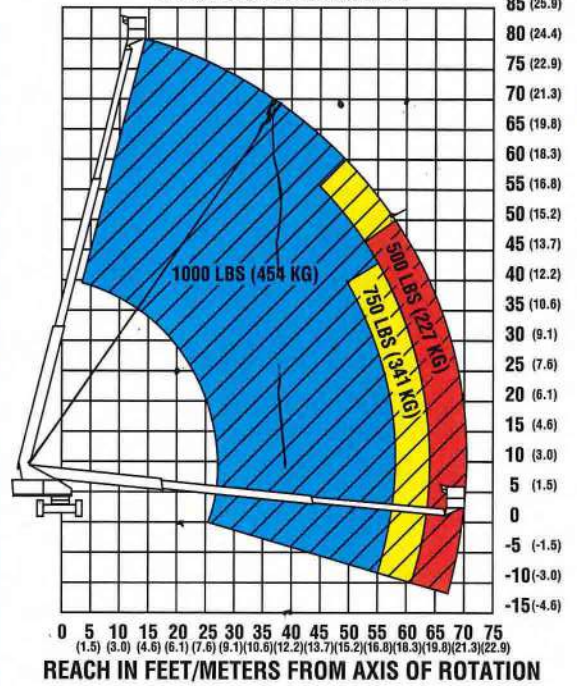
MACHINE SPECIFICATIONS

DIMENSIONS	80HX 2WD	80HX 4WD
PLATFORM HEIGHT	80 ft. 24.4m	80 ft. 24.4m
WORKING HEIGHT	86 ft. 26.2m	86 ft. 26.2m
PLATFORM DIMENSIONS-STD.	36" x 96" x 44" .91m x 2.44m x 1.11m	36" x 96" x 44" .91m x 2.44m x 1.11m
PLATFORM CAPACITY (restricted)	1000 lbs. (454 kg.) • 750 lbs. (341 kg.)	1000 lbs. (454 kg.) • 750 lbs. (341 kg.)
PLATFORM CAPACITY (unrestricted)	500 lbs. (227 kg.)	500 lbs. (227 kg.)
STOWED LENGTH	33ft., 7 in. 10.2m	33 ft., 7 in. 10.2m
STOWED HEIGHT	9 ft., 7 in. 2.92m	9 ft., 7 in. 2.92m
WIDTH (axles retracted)	8 ft. 0 in. (2.44m)	8 ft. 6 in. (2.59m)
WIDTH (axles extended)	10 ft. 0 in. (3.05m)	10 ft. 0 in. (3.05m)
TAILSWING	2 ft., 11 in. .89m	2 ft., 11 in. .89m
GROSS WEIGHT (approx)	(1) 28,600 lbs. 12,973 kg.	(1) 29,100 lbs. 13,200 kg.
ENGINE (gas)	63 HP @ 2800 rpm	63 HP @ 2800 rpm
ENGINE (diesel)	70 HP @ 2400 rpm	70 HP @ 2400 rpm
MAIN PUMP OUTPUT	39 gpm @ 2800 rpm 147.6 L/min.	39 gpm @ 2800 rpm 147.6 L/min.
AUXILIARY PUMP OUTPUT	4.75 gpm 18 L/min.	4.75 gpm 18 L/min.
HYDRAULIC TANK CAPACITY	55 U.S. 208.2 L	55 U.S. 208.2 L
FUEL TANK CAPACITY	26 U.S. gals. 98.4 L	26 U.S. gals. 98.4 L
TRAVEL SPEED	3.5 mph 5.6 km/hr	2.8mph 4.5 km/hr
GRADEABILITY	25% 14°	35% 19°
TURNING RADIUS (outside)	23 ft., 8 in. (7.21m)	23 ft., 8 in. (7.21m)
2 wheel steer (axles retracted)	25 ft., 4 in. (7.72 m)	25 ft., 4 in. (7.72 m)
2 wheel steer (axles extended)	13 ft., 8 in. (4.17m)	13 ft., 8 in. (4.17m)
4 wheel steer (axles retracted)	14 ft., 5 in. (4.39 m)	14 ft., 5 in. (4.39 m)
4 wheel steer (axles extended)		
HORIZONTAL REACH	70 ft. 7 in. 21.6m	70 ft. 7 in. 21.6m
TIRES (standard)	15 x 19.5 pneumatic	15 x 19.5 pneumatic
WHEELBASE	120 in. 3.05m	120 in. 3.05m
GROUND CLEARANCE	10 in. 27cm	10 in. 27cm

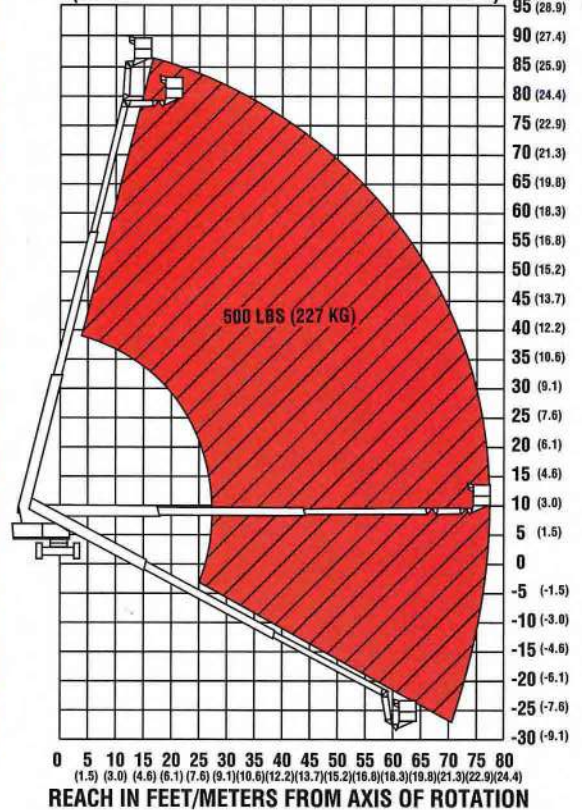
(1)GVW may increase to meet country standards or with the addition of optional equipment



80HX REACH DIAGRAM



80HX+6 REACH DIAGRAM (JLG's Patented Extend-A-Reach Feature)





The 80HX's many features including maneuverability, reach, power and capacity make it ideal for a multitude of high reach access applications

EXTEND-A-REACH

JLG's patented Extend-A-Reach option is a six-foot articulating boom section attached to the end of the fly boom. The main feature of this extension arm is its ability to articulate 15 degrees

80HX / 80HX+6 COMPARISON CHART

SPECIFICATIONS	80HX 2WD	80HX+6 2WD
MAXIMUM HEIGHT	80 ft. 24.4m	86 ft. 26.2m
MAXIMUM REACH	70 ft. 7 in. 21.6m	76 ft. 11 in. 23.4m
BELOW GROUND REACH	15 ft. 9 in. 4.80m	21 ft. 8 in. 6.60m
STOWED LENGTH	33 ft. 7 in. 10.2m	36 ft. 9 in. 11.2m
BOOM ANGLE (above horiz.) (below horiz.)	75° -16°	75° +15° ART. -16°, -80° ART.
PLATFORM (unrestricted) CAPACITIES (restricted)	500 lbs. (227 kg) 1000 lbs. (454 kg)	500 lbs. (227 kg)
PLATFORM SIZES (standard)	36 in. x 96 in. .91m x 2.44m	36 in. x 72 in. .91m x 1.82m
GROSS WEIGHT (approx)	(1) 28,600 lbs. 12,973 kg	(1) 31,850 lbs. 14,447 kg
TIRE FILL	pneumatic	foam

(1)GVW may increase to meet country standards or with the addition of optional equipment

FOUR-WHEEL DRIVE/FOUR-WHEEL STEER

Optional configurations include JLG's high-powered four-wheel drive system which features two-speed piston drive motors, torque hub drive on four wheels, balanced by three flow dividers for responsive, powerful mobility. For maneuvering in tight situations, JLG offers four-wheel and crab steering. Four-wheel steer substantially reduces JLG's already short outside turning radius, while crab steer provides one foot of sideward movement for every two feet of forward to enable positioning in tight, confined areas.

OPTIONAL EQUIPMENT

Dual Fuel (LP/Gasoline), F4L912 Deutz Diesel Engine, Extend-A-Reach, Four-Wheel Drive, Four-Wheel Steer, 8' (2.44m) Minimum Underhang Platform, Worklights Package, Hostile Environment Kit, Foam-Filled Tires, Travel Alarm, Rotating Beacon, Pilot-operated Hydraulic Controls (not available with Extend-A-Reach), Proportional Telescope, Cold Weather Package and CSA and EN280 European Packages.



The Extend-A-Reach option articulates 15° above or 80° below horizontal of main boom to give operator "up and over" or "out and down" access.

above or 80 degrees below horizontal of the main boom. The Extend-A-Reach option gives the operator the benefit of "up and over" or "out and down" access in areas where a straight boom would encounter interference with such obstacles as structural steel framework, aircraft tailsections, dock areas and overhead duct work. Articulation is accomplished by a solenoid valve actuated hydraulic cylinder enclosed within the extension tube. Platform leveling is accomplished through a master slave cylinder combined with a pantographic link attaching the platform to the fly boom.